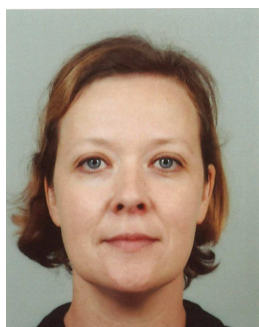


ÉLECTION AU CONSEIL D'ADMINISTRATION



LES CANDIDATS CFE-CGC



Sandrine
ROCH-LEFEVRE
PSE-
SANTE/SER/BASEP



Olivier
KAYSER
PDS-
DEND/SESAM/BPRM



Christine
BARTIZEL
PSE-
SANTE/SMERI/LAMR



David
BOIREL
PSN-SRDS/SATIN



Sylvie
BORRELY
PSE-
DT/GAF_SE/BGSES



Jean-Pierre
CARRETON
PSN-EXP/SSTC



Laurence
ESTELLER
PDS-DEND/SESAM



Yves
BRISSET
DPSPI



Aurélie
VOGEL
PSN-EXP/SSREP/BREX



Nicolas
DUBOURG
PSE-ENV/SRTE/LECO



Noha
PETIT
BU-DCI



Hervé
HAGUENAUER
DAFCJ/SAC